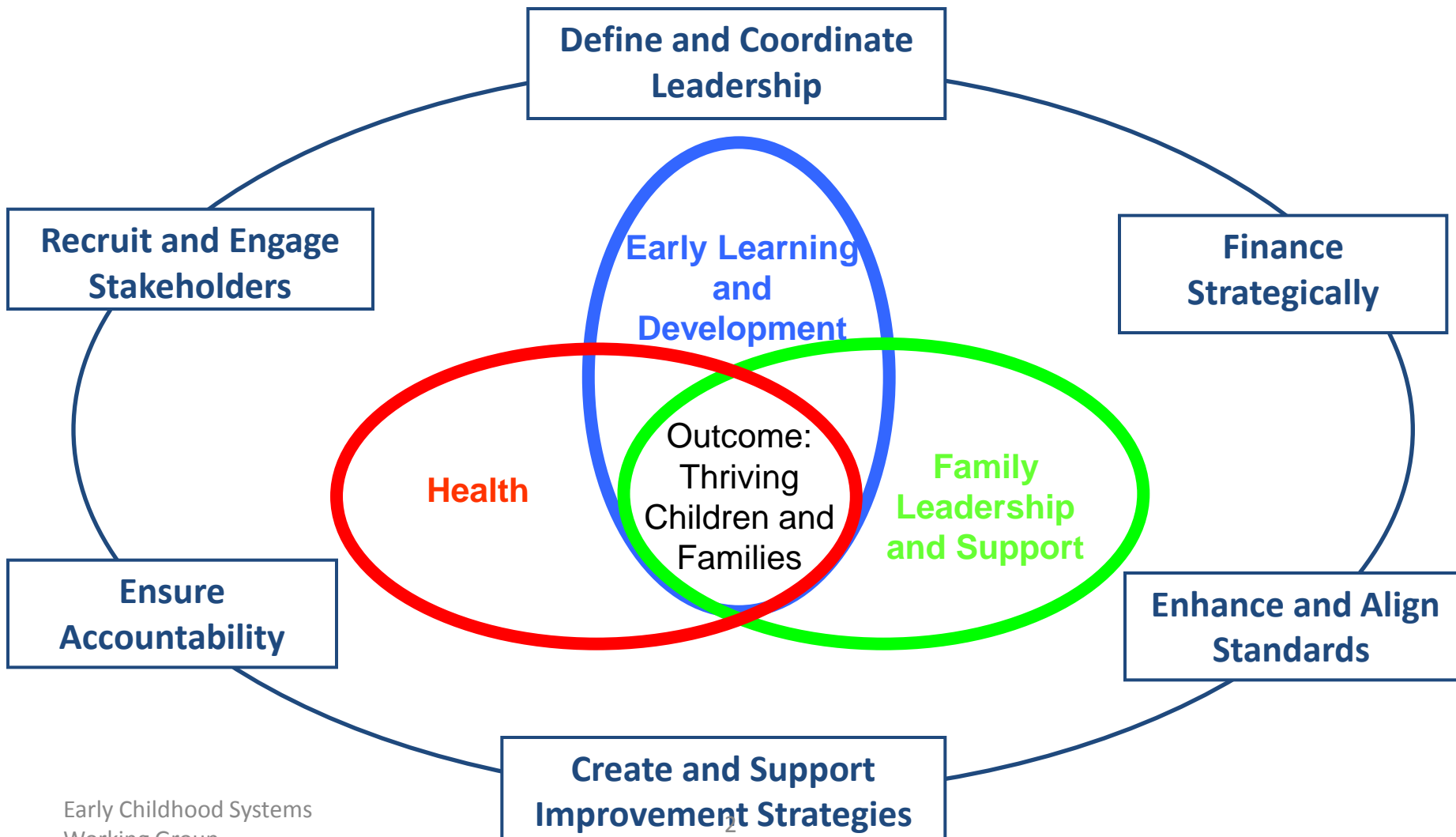
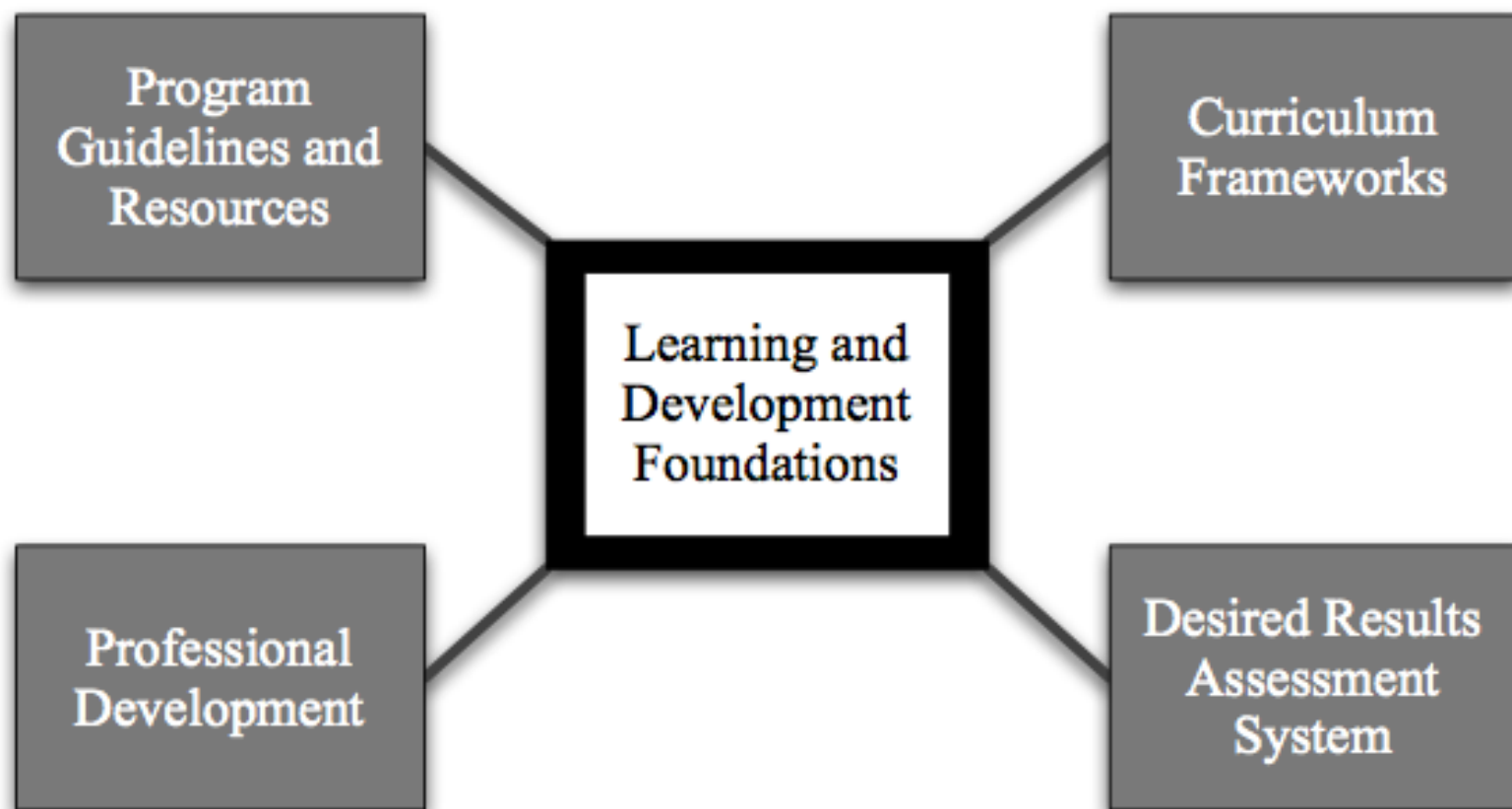




# What Are the Functions of a Comprehensive Early Childhood System ?



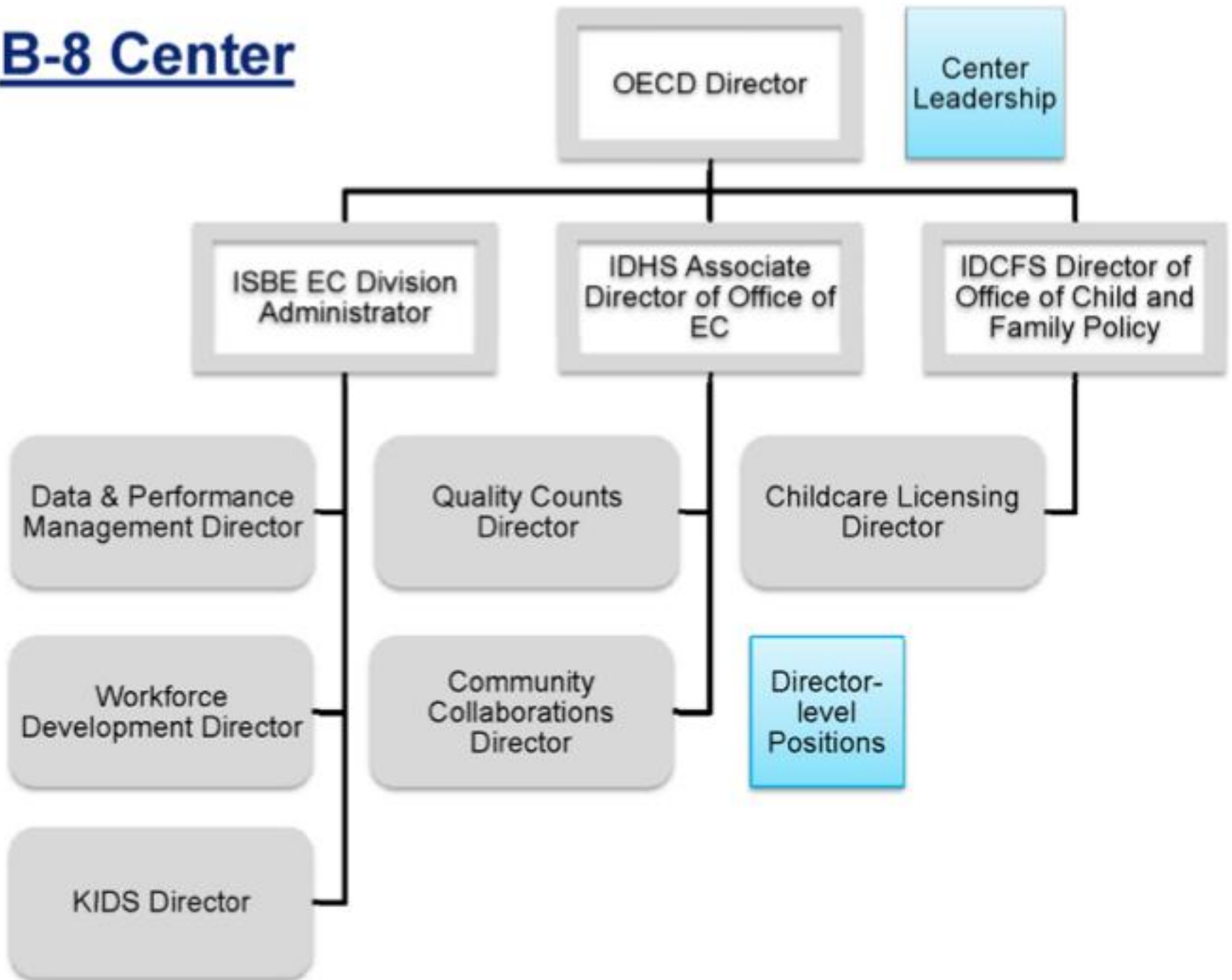
## Early Learning and Development System



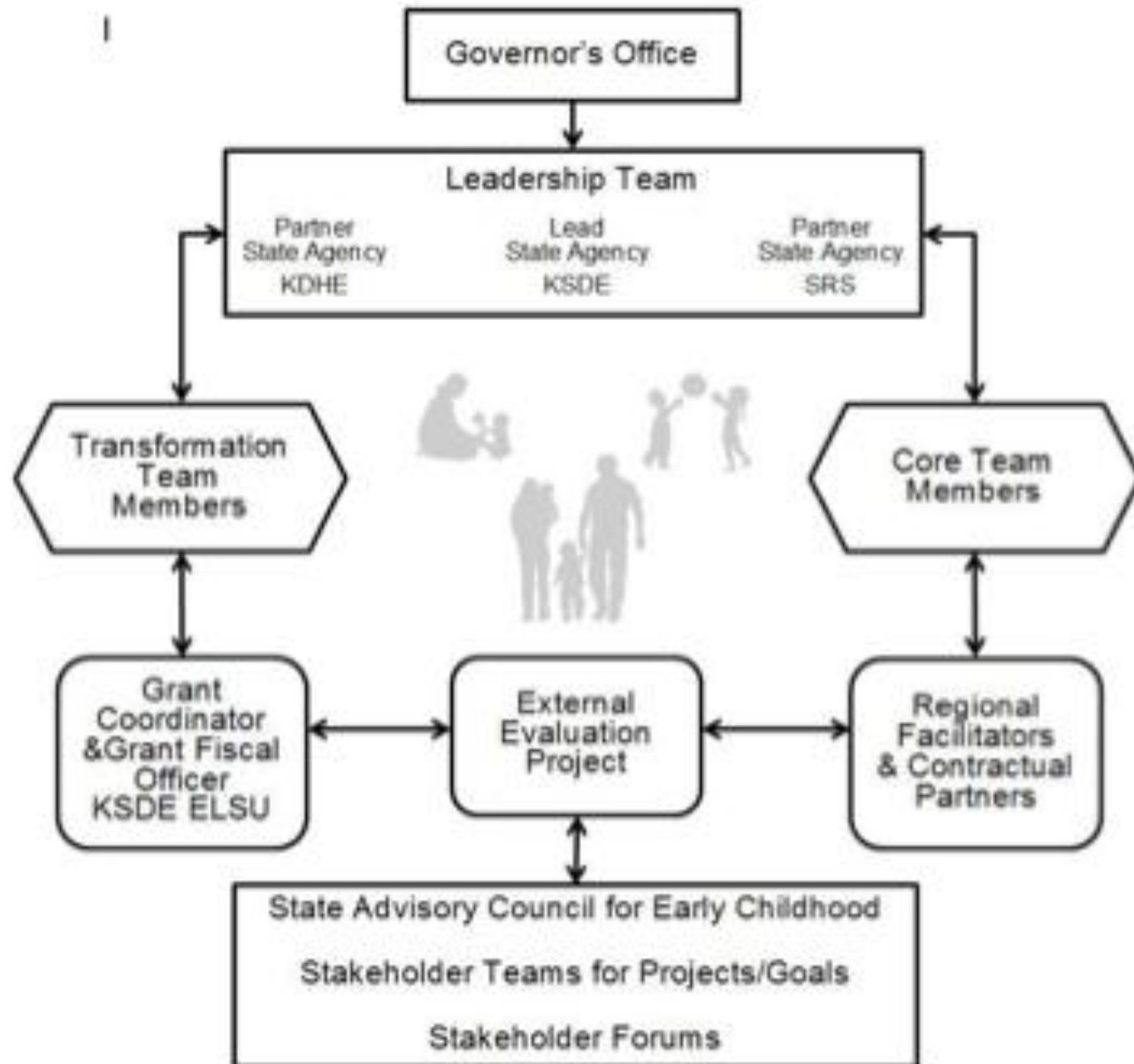
**Figure 1: California's Early Learning and Development System**

**Tools for Assessing Child Development and School Readiness**

# B-8 Center



Organizational Structure  
State of Kansas Early Learning Challenge  
Race to the Top Grant



### Early Learning State Leadership Team

Established by the Joint Resolution Partnership Agreement to encourage state-level Agencies and Organizations to collaborate and align efforts toward the Washington Early Learning Plan with a clear accountability structure

**Thrive by Five Washington**  
 Private sector alignment; community engagement; public will; parenting

**Office of the Superintendent of Public Instruction**  
 K-12 oversight and administration

**LEAD AGENCY**  
 Department of Early Learning  
 Subsidy Policy, CCDF, HSSCO, ECEAP, ICC Part C

**Early Learning Advisory Council**  
 \*members indicated in red

Washington State Early Learning Plan

**Department of Social and Health Services**  
 TANF, CPS, Foster Care

**Department of Health**  
 Child Profile, ECCS, Project Launch, WIC, and Public Health initiatives

Interagency Joint Resolution



Love.Talk.Play.

WaKIDS

TQRIS

Early Learning Guidelines

Professional Development

Aligned health and social services

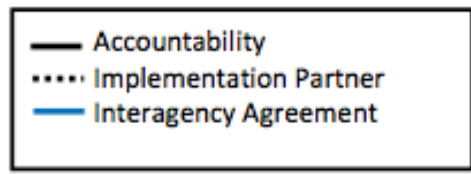
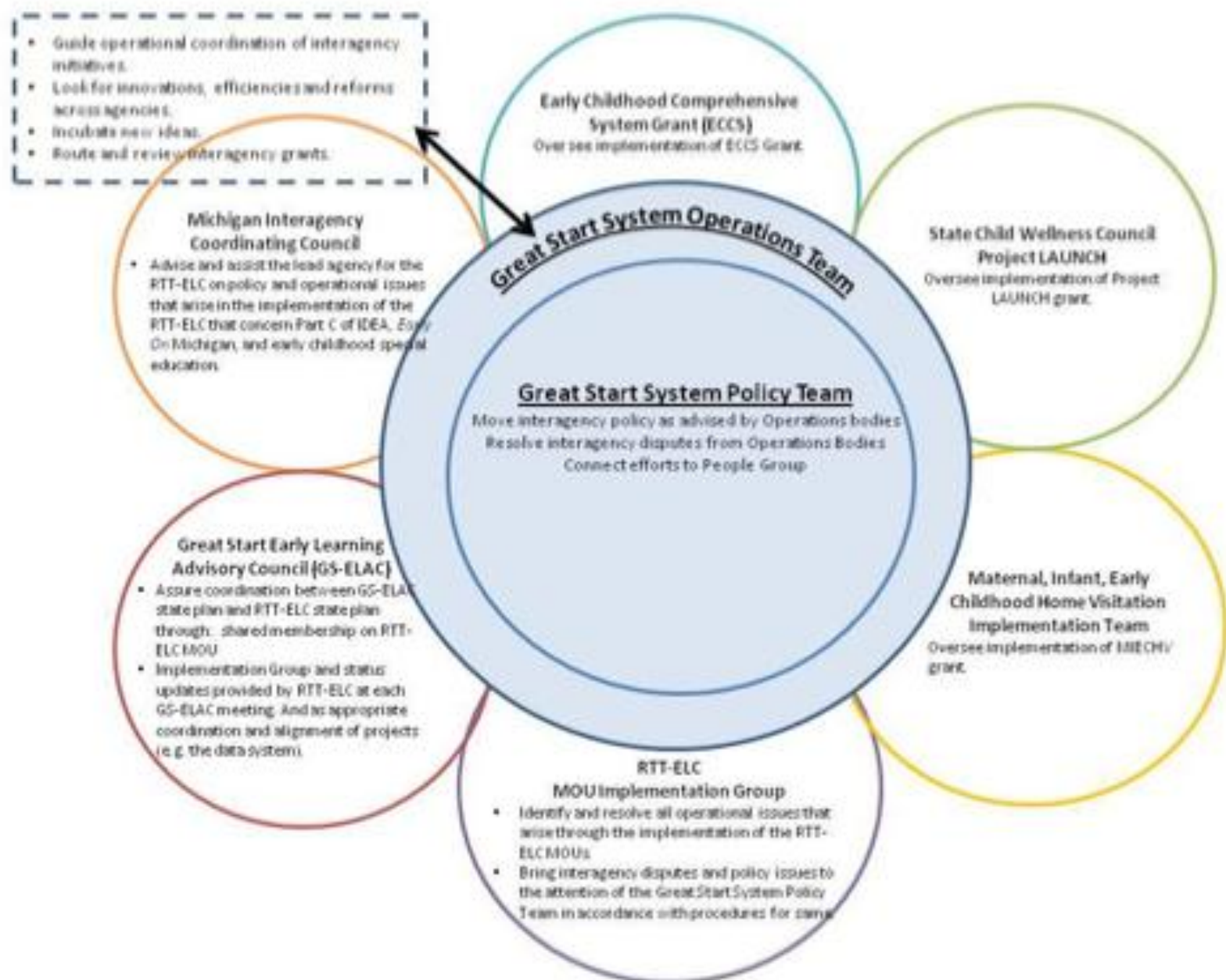
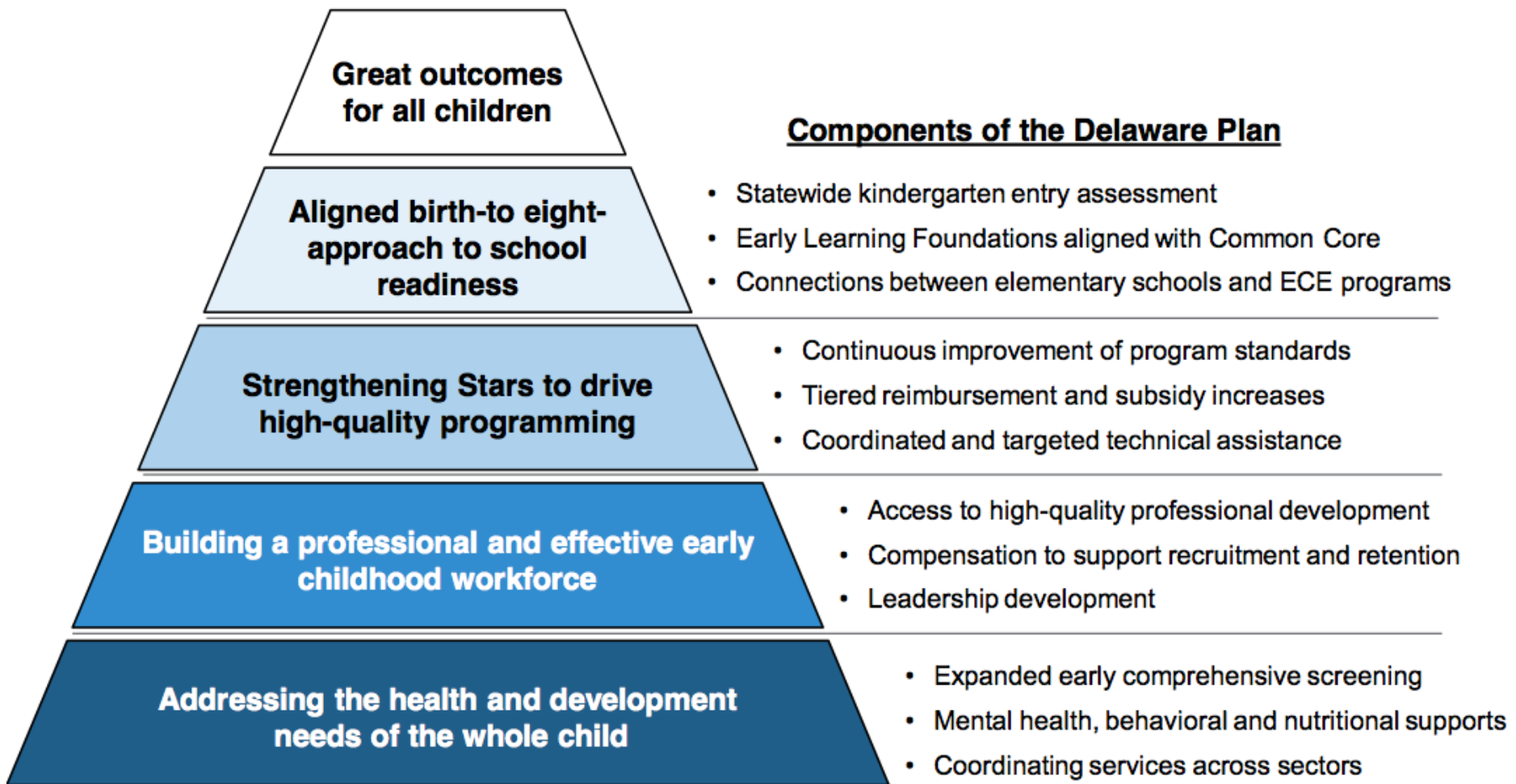


Figure 2: Michigan Early Learning Challenge Grant-Interagency Initiatives & Operations

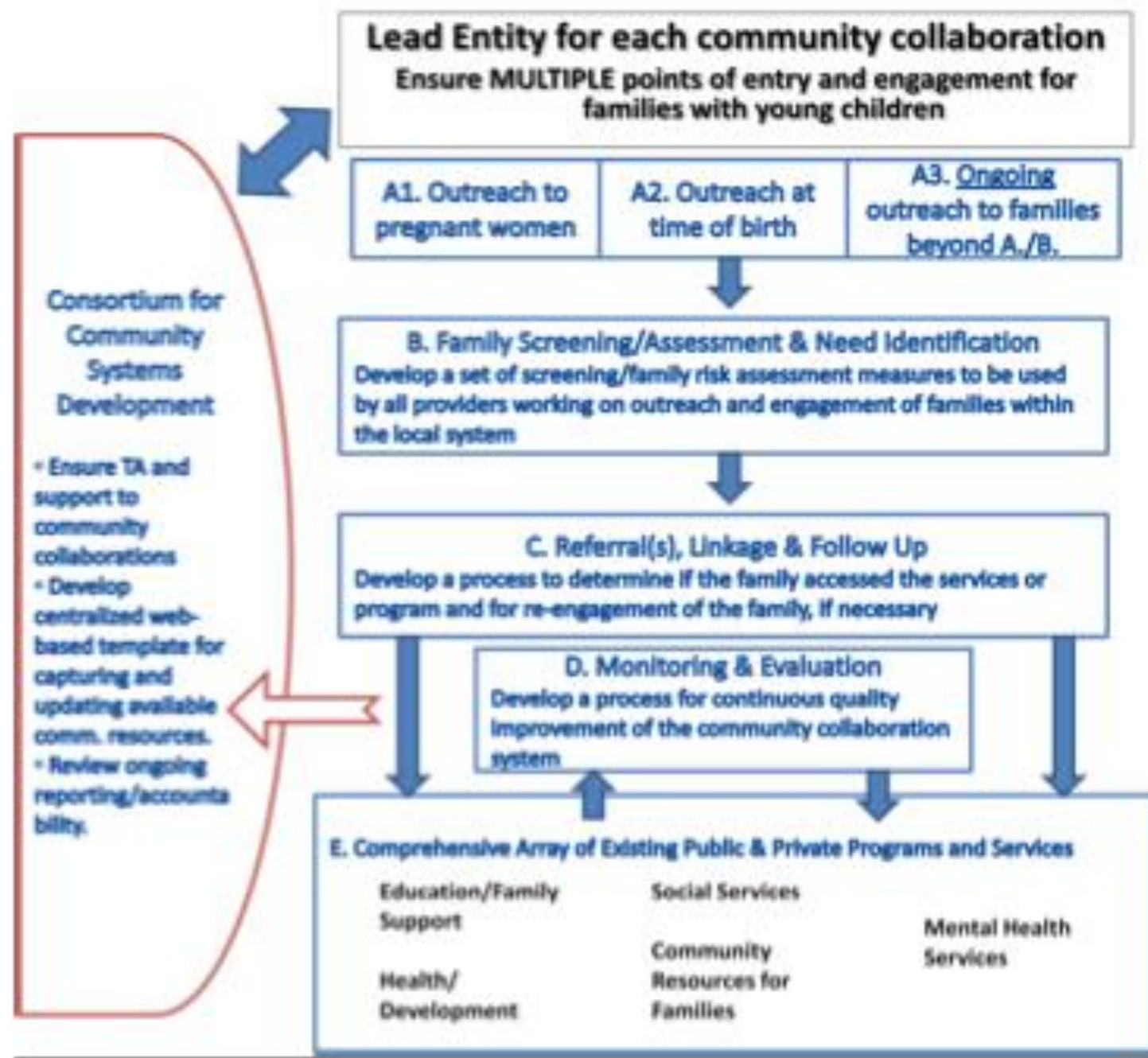






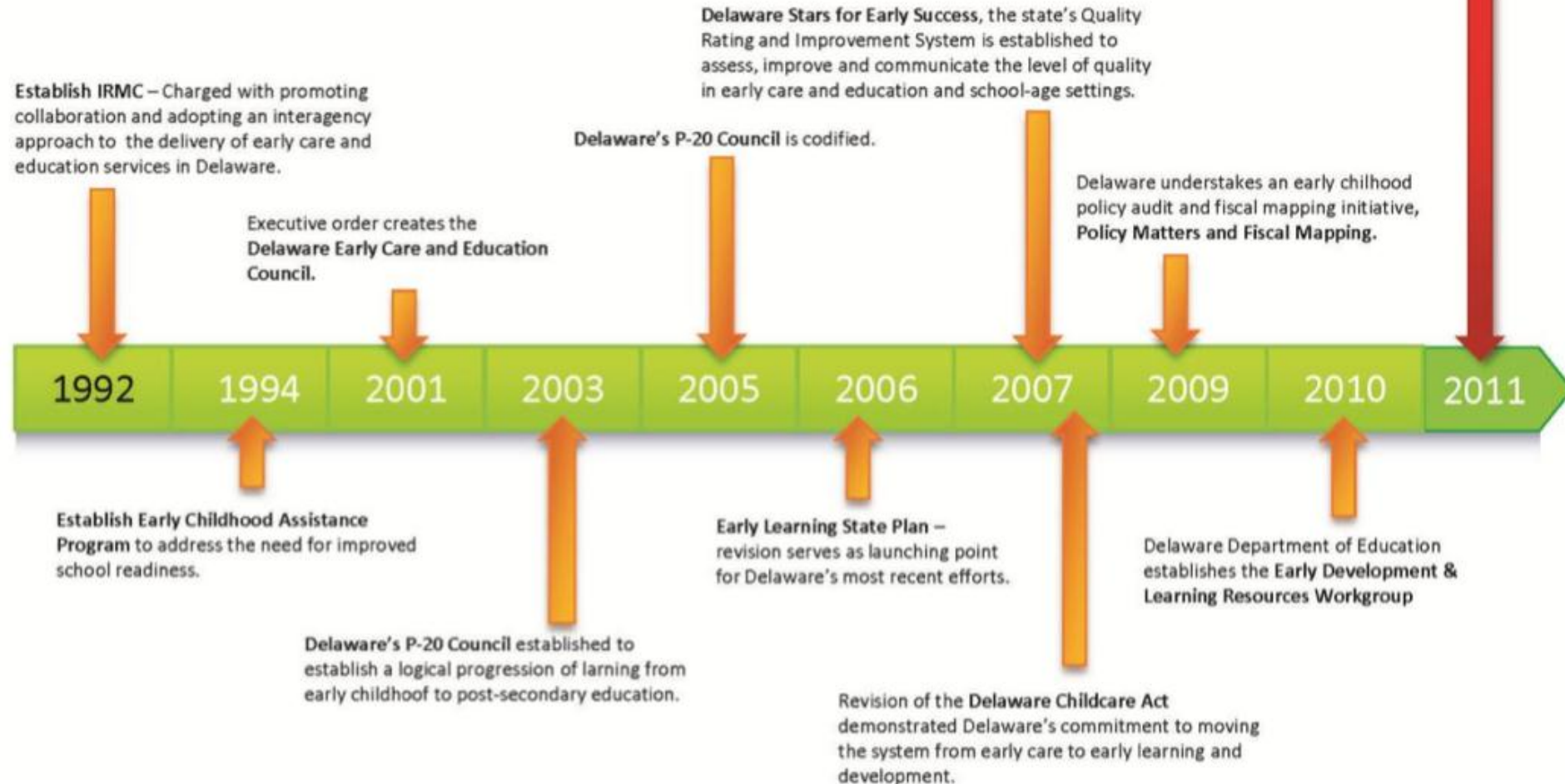


## Illinois Community Collaboration Model



## Delaware's Commitment to Supporting Early Learning and Development

Governor Markell, with the support of the General Assembly, commits \$22 million dollars in Delaware's fiscal year 2012 budget to early care and education.



# Improved Outcomes for Children

