

The Pritzker Children's Initiative

- The Pritzker Children's Initiative (PCI) is a project of the J.B. and M.K. Pritzker Family Foundation
- PCI vision: *Expand equitable access to and participation in high quality services for at least **one million low income infants, toddlers and their families** by 2023 to get them on track for school by assuring healthy beginnings, supported families, and high quality child care*



National Collaborative for Infants & Toddlers

- NCIT is committed to advancing the most promising policies and programs that ensure families have the support they need
- Key Areas:



Healthy Beginnings



Supported Families



High Quality Child Care and Learning

NCIT Policy Priorities

Increase the number of families with children prenatal-to-age-three who are connected to essential health, development and social emotional support services

Increase the number of low-income infants and toddlers receiving affordable, high-quality child care

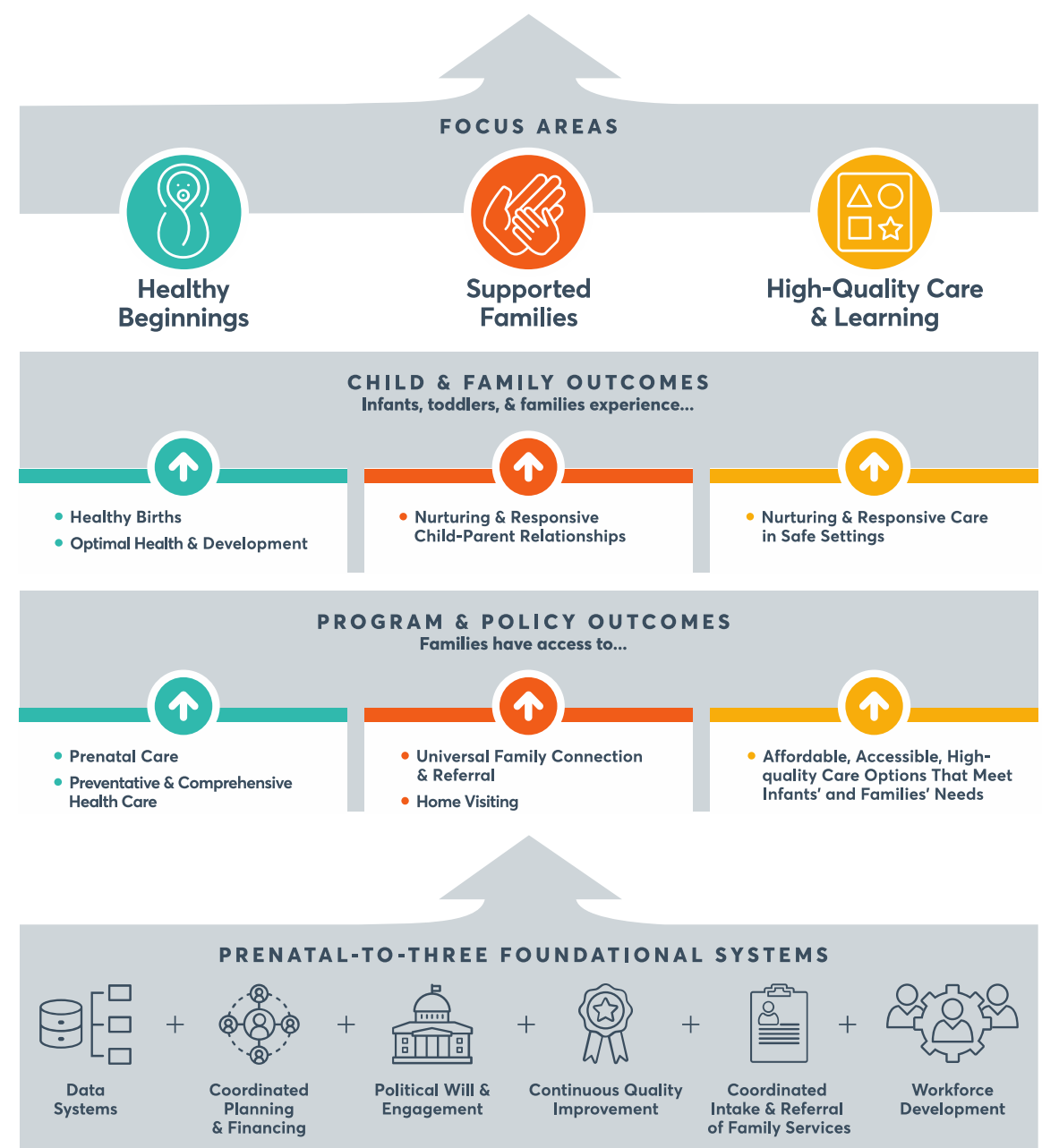


Collaborative Members



Measuring Success: Healthy Development by Age 3

- With a focus on equity, states and communities can build and sustain locally responsive programs, policies, and systems that meet the needs of infants, toddlers, and their families.
- Policy outcomes support child and family outcomes, and prenatal-to-three systems create a sustainable infrastructure to ensure families get the right services at the right times.



Equitable Access and Equitable Outcomes: Trending Strategies for PN-3

- **Improving birth outcomes by addressing racial disparities and/or targeting under-served populations** (Los Angeles County, Baltimore, Flagler/Volusia Counties, FL, Kent Cty MI)
- **Universal newborn screening and referral** (Austin, Chattanooga, Norwalk CT, Watauga Cty NC, Pierce Cty, WA, Boone Ct. MO)
- **Targeting specific, high-need populations to facilitate access to high-quality services:** Cleveland (neighborhoods with high lead levels); Ramsey Cty, MN (MFIP/TANF clients)



Community Trends--Continued

- **Coordinated system for developmental screening and referral across health and early learning:** (Tarrant Cty, TX, Salt Lake City, Spartanburg, SC, Pierce Cty. WA, Ventura Cty CA)
- **Focusing CQI efforts on specific services to ensure effectiveness for specific populations:** (Albuquerque, Tucson, Memphis, Multnomah Cty OR)
- **Integrated data systems** (Kent Cty, MI, Boston)
- **Expansion of high-quality, targeted services:**
 - Integration of maternal mental health services with PN-3 primary, preventative health care (Orange Cty, CA)
 - Support for home-based child care through networks (New Haven, CT, New York City)



Community Trends--Continued

All of it! Guilford County, North Carolina

- Navigation system to connect families to the right resources at the right time
- Expanding proven programs (Nurse Family Partnership, Family Connects, Help Me Grow, Healthy Steps)
- Early literacy strategic plan
- High-quality care affordable/accessible to all
- Building authentic family voice and political will
- Improving PreK Transition
- Supporting technology, rigorous evaluation, culture of CQI



NCIT States and Communities

Current Engagements

+ CA + OH
+ IL + OR
+ NC
+ NY

State Grant Competition Awardees

+ AR + NE + SC
+ D.C. + NV + TX
+ LA + NJ + WA
+ MD + NM + WI
+ MI + PA

Communities

CSSP

- Denver, CO
- Orange County, CA
- Multnomah, OR
- Boston, MA
- Onondaga, NY
- Ventura, CA
- Kent, MI
- Guilford, NC
- Los Angeles, CA
- Volusia/ Flagler Counties, FL

NLC

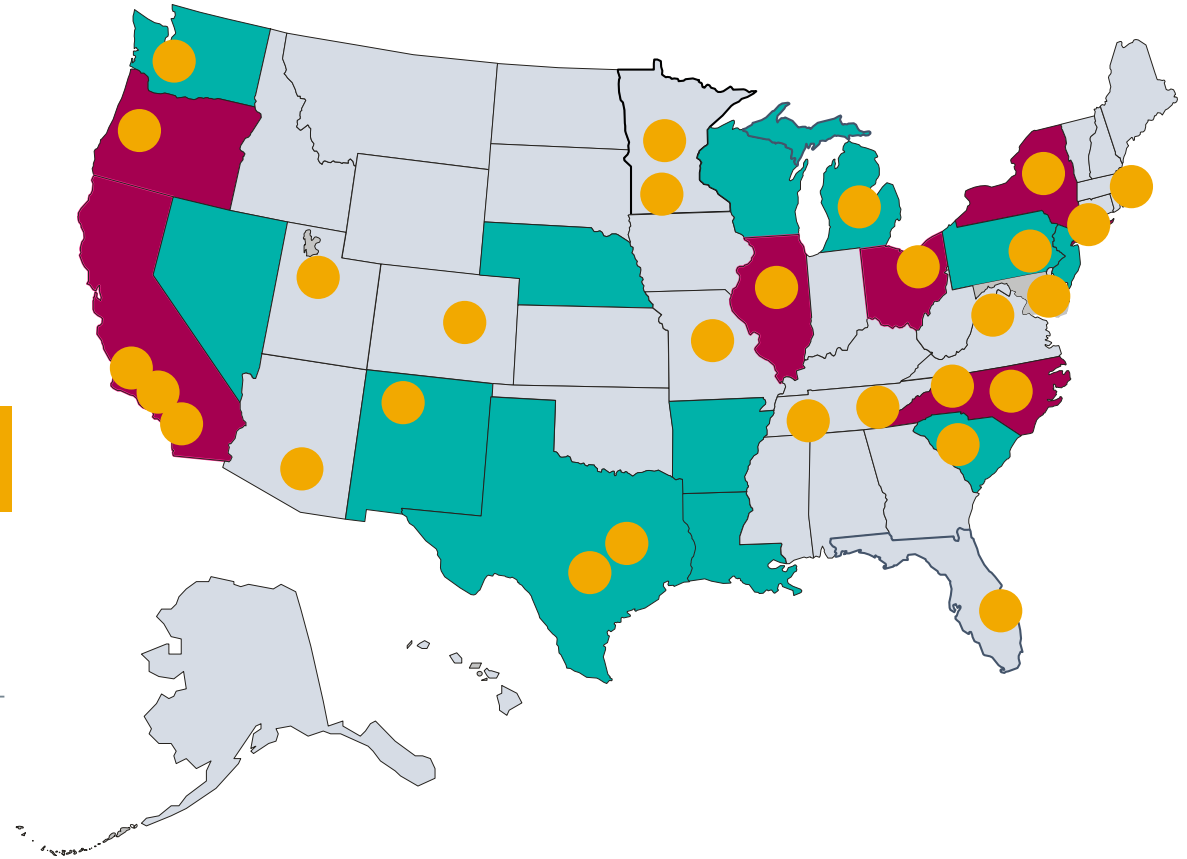
- Austin, TX
- Baltimore, MD
- Cleveland, OH
- Chattanooga, TN
- Denver, CO
- Minneapolis, MN

NACo

- Tarrant, TX
- Watauga, NC
- Dauphin, PA
- Ramsey, MN
- Champaign, IL
- Washington, VA
- Pierce, WA
- Boone, MO

Strive/NICHQ

- Tucson, AZ
- Albuquerque, NM
- Norwalk, CT
- Salt Lake City, UT
- Memphis, TN
- Spartanburg, SC



NCIT's Online Solutions Center: www.thencit.org

- Dedicated, easy to navigate resource where policymakers, influencers and early childhood leaders can access information and tools to inform prenatal-to-three policies
- Built for activists and changemakers in states, communities and throughout the country
- Includes case studies, guidance on building and executing plans, information for measuring impact and research-based messaging to garner support

