

A Roadmap for Collaborative and Effective Evaluation and Research in Tribal Communities: A Tool for Co-Creating Knowledge

**Plenary Session: Diversity, Equity and Inclusivity in
ECE Policy, Practice and Research — An Overarching Perspective for the Field**

Presented by:

Aleta Meyer

Jessica Barnes-Najor

Acknowledgement to:

Child Welfare Research and Evaluation Tribal Workgroup

The Children's Bureau

Presented at the 2018 Annual Meeting of the
Child Care and Early Education Policy Research Consortium

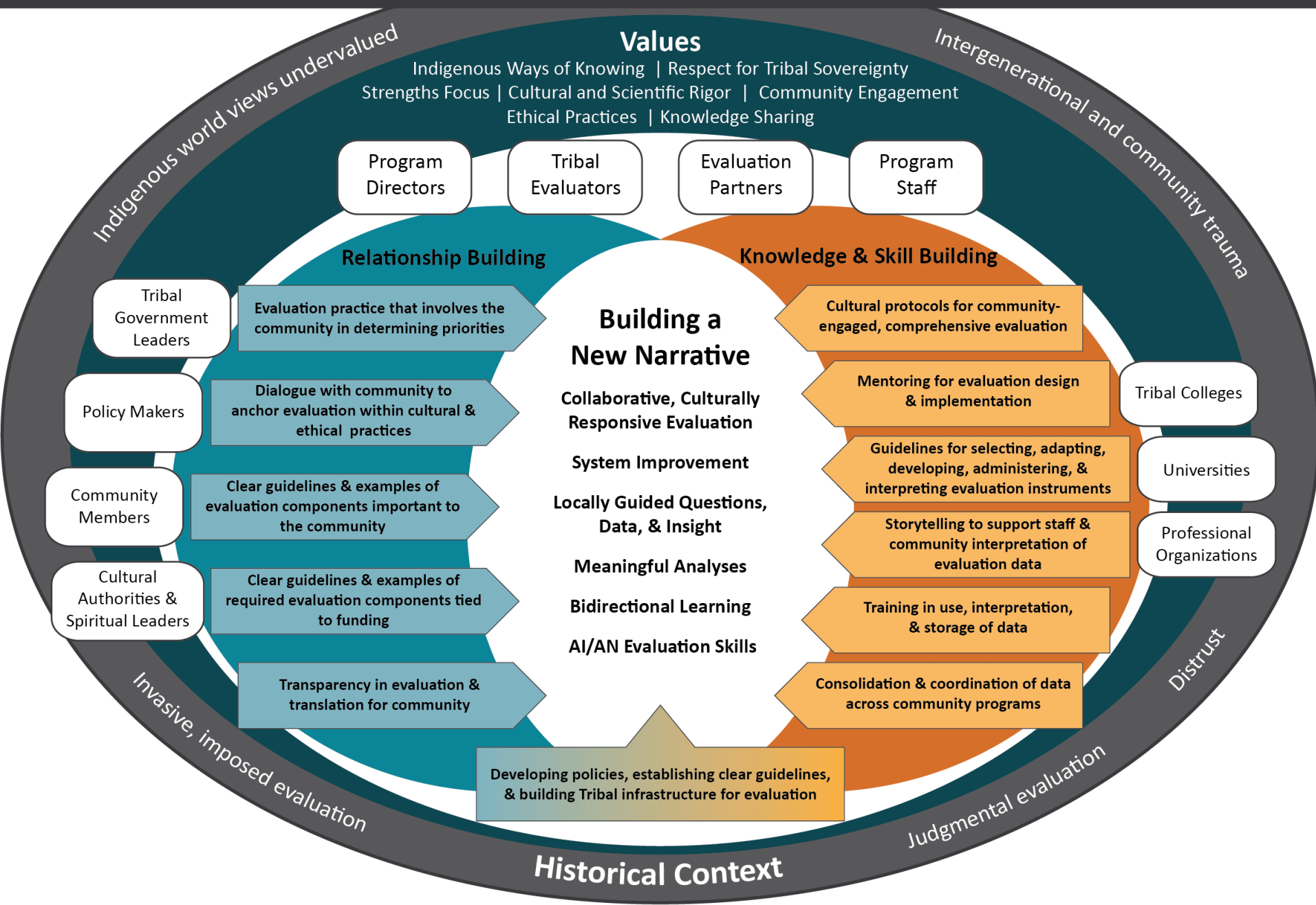


OPRE's Approach to Research and Evaluation with Tribal Communities

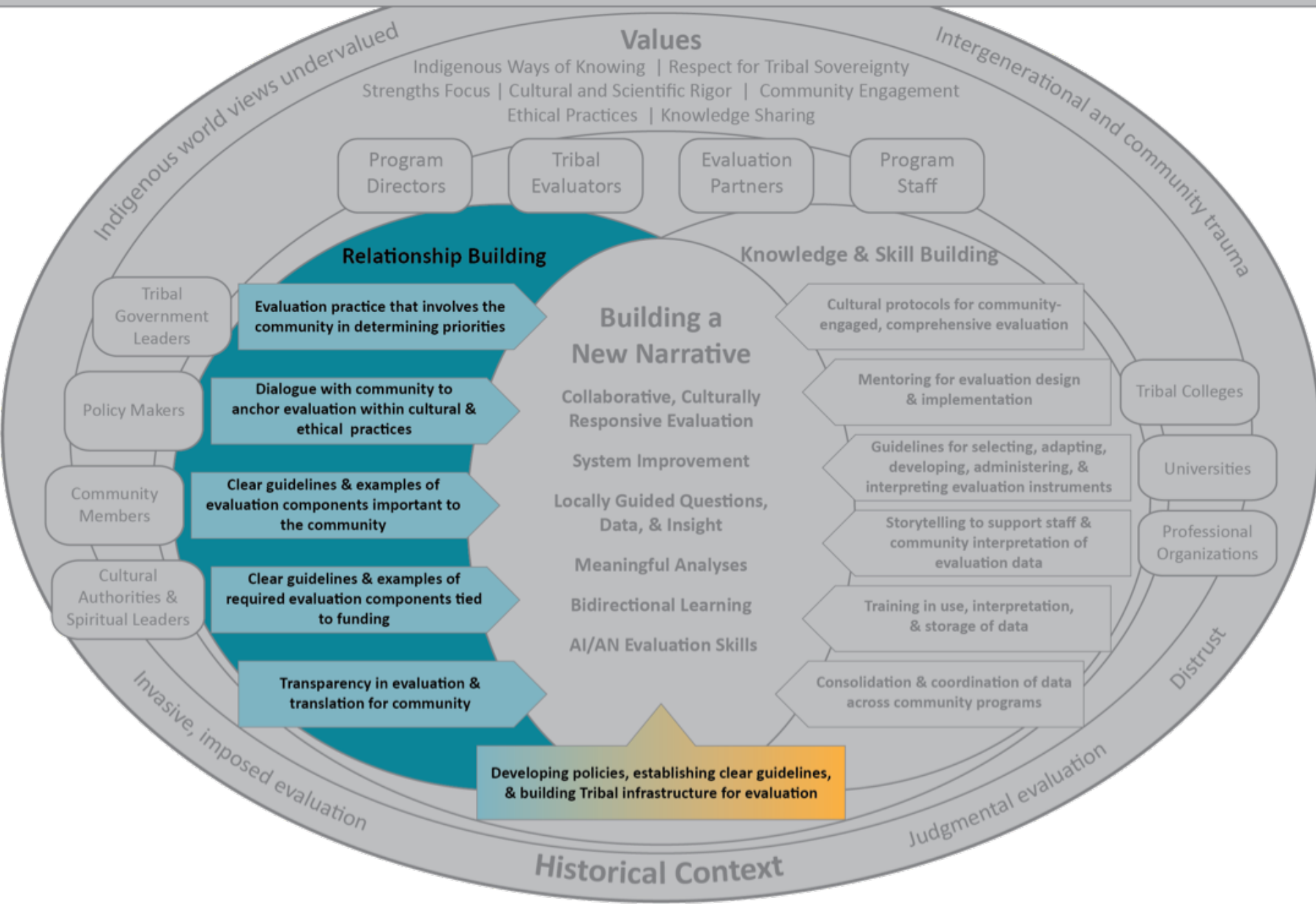
- Grounded in ACF's Evaluation Policy to promote cultural rigor, relevance, transparency, independence, and ethics in the conduct of evaluations
- Designed to maximize learning from on-going ACF's Activities
- Aligned with CB's Roadmap for Building a New Narrative



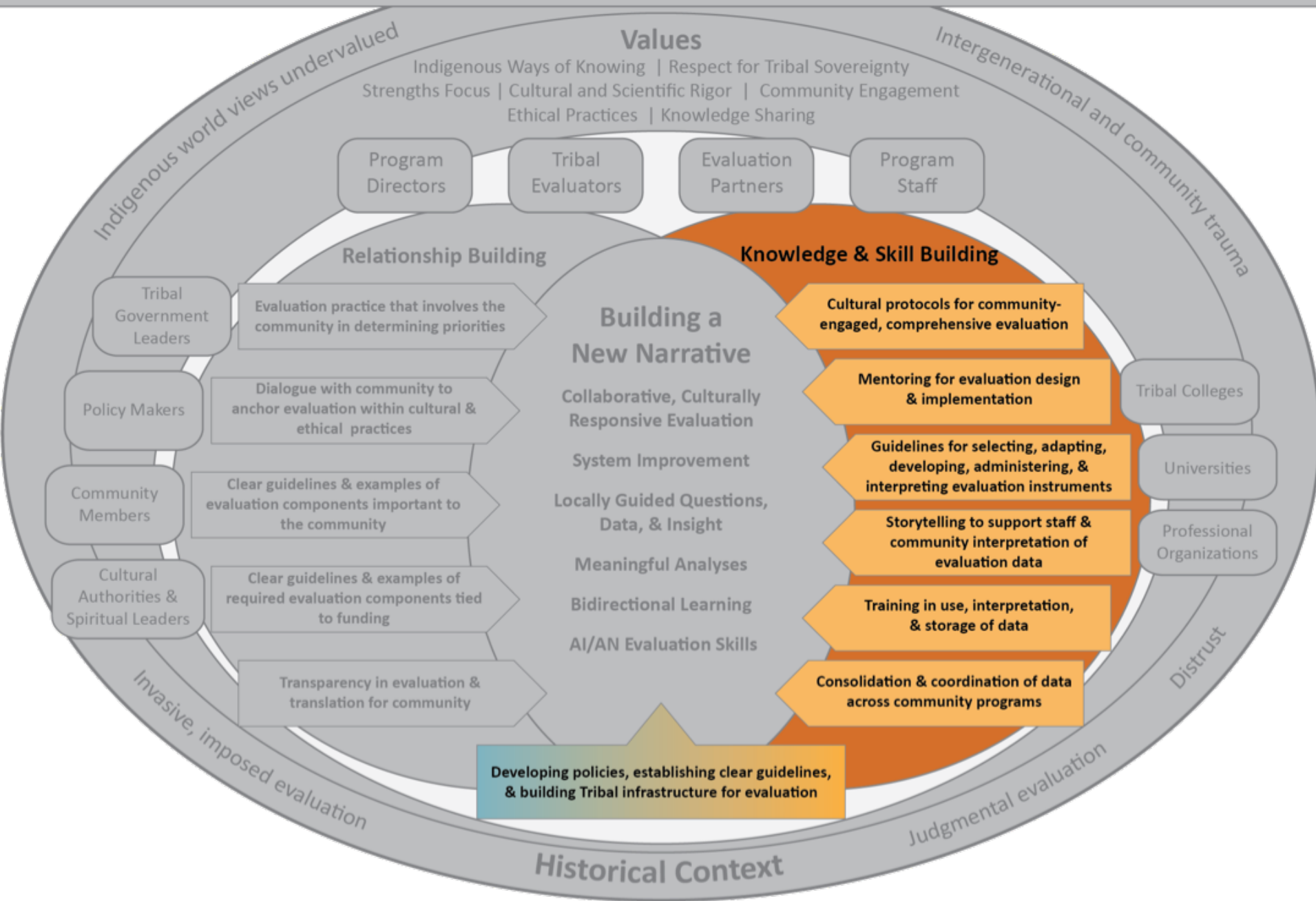
CO-CREATING COLLABORATIVE & EFFECTIVE EVALUATION TO IMPROVE TRIBAL CHILD WELFARE PROGRAMS



CO-CREATING COLLABORATIVE & EFFECTIVE EVALUATION TO IMPROVE TRIBAL CHILD WELFARE PROGRAMS



CO-CREATING COLLABORATIVE & EFFECTIVE EVALUATION TO IMPROVE TRIBAL CHILD WELFARE PROGRAMS

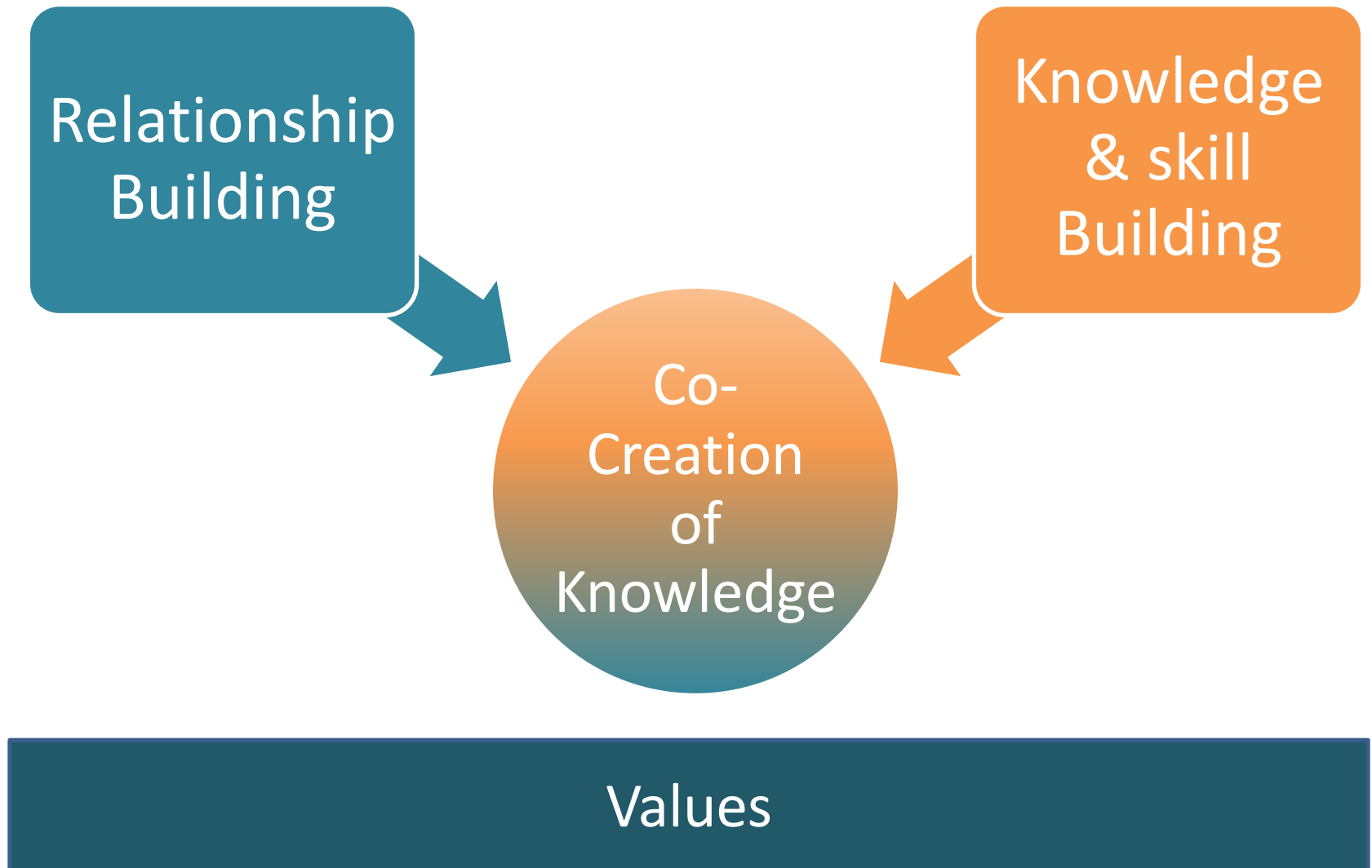


The Roadmap in Practice: Communities of Learning

- Tribal Early Childhood Research Center
 - American Indian and Alaska Native FACES
 - **Early developmental screening tools**
 - CLASS in Tribal Communities
 - Tribal Early Childhood Needs Assessment

www.tribalearlychildhood.org

Application of the Roadmap



Communication Plan

Conference calls

- Share materials
- Discuss & make decisions

In-person meetings



- Connect as humans

Roadmap Resources

- <https://www.acf.hhs.gov/cb/resource/tribal-workgroup>
- <https://tinyurl.com/RoadmapV1>
 - [Creating a New Narrative: Collaborative and Effective Evaluation in Tribal Communities](#)

