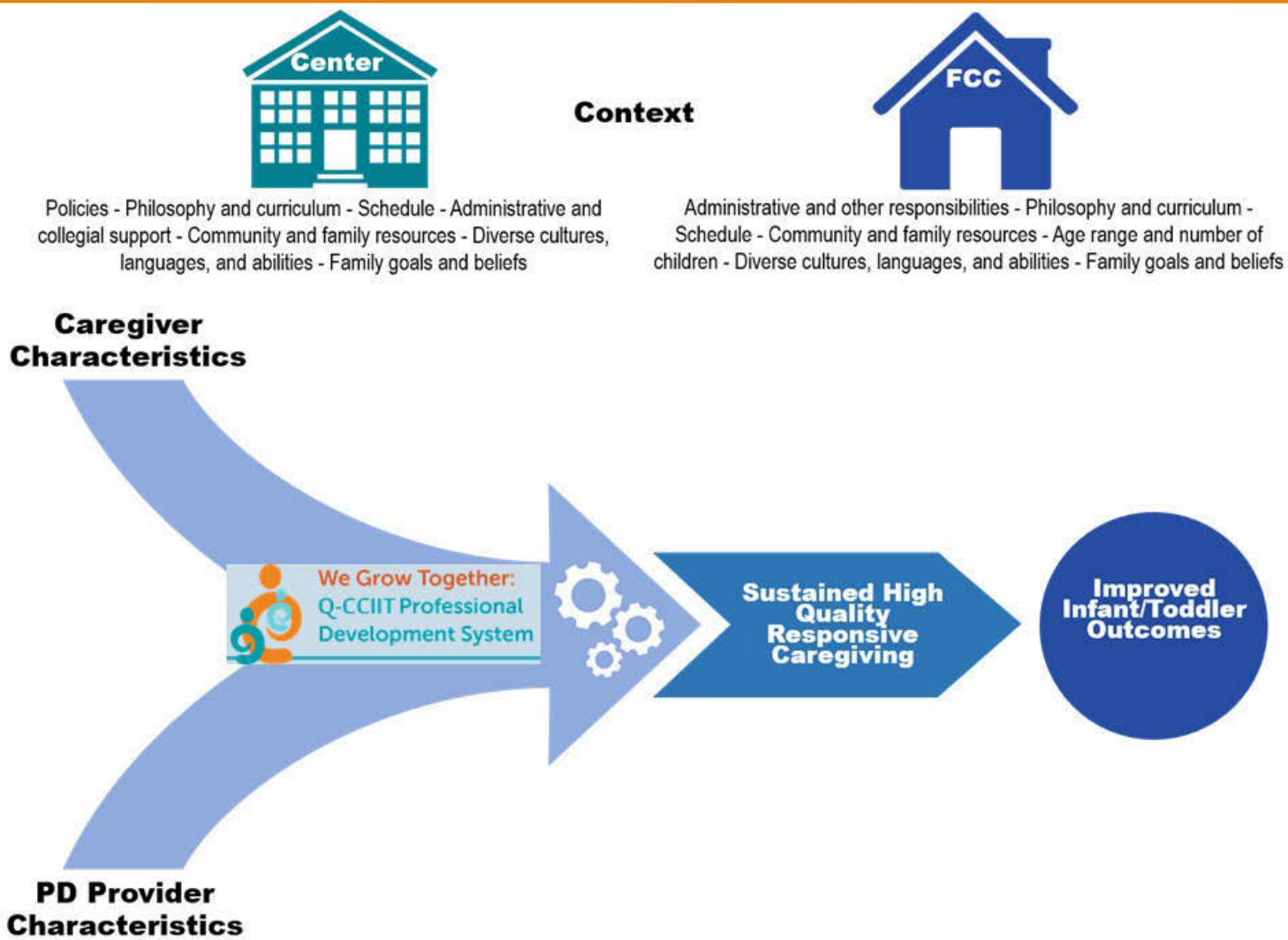


Measuring potential barriers and facilitators



Measuring potential barriers and facilitators

- Beliefs about infant-toddler development and caregiving – Baby FACES survey, KIDI (MacPhee 2002)
- Stages of Change scale– self-report form (Peterson & Weber, 2010; Montes, Peterson, & Weber, 2011)
- Beliefs about professional development – Baby FACES survey, Teacher Attitudes about Professional Development (Torff et al. 2005)
- Mental Health (stress, anxiety, depressive symptoms) CES – D – short form (Radloff, 1997); Kessler – 6 Self-Report Measure
- Sense of self-efficacy – Teacher Opinion Survey (Geller & Lynch, 1999)